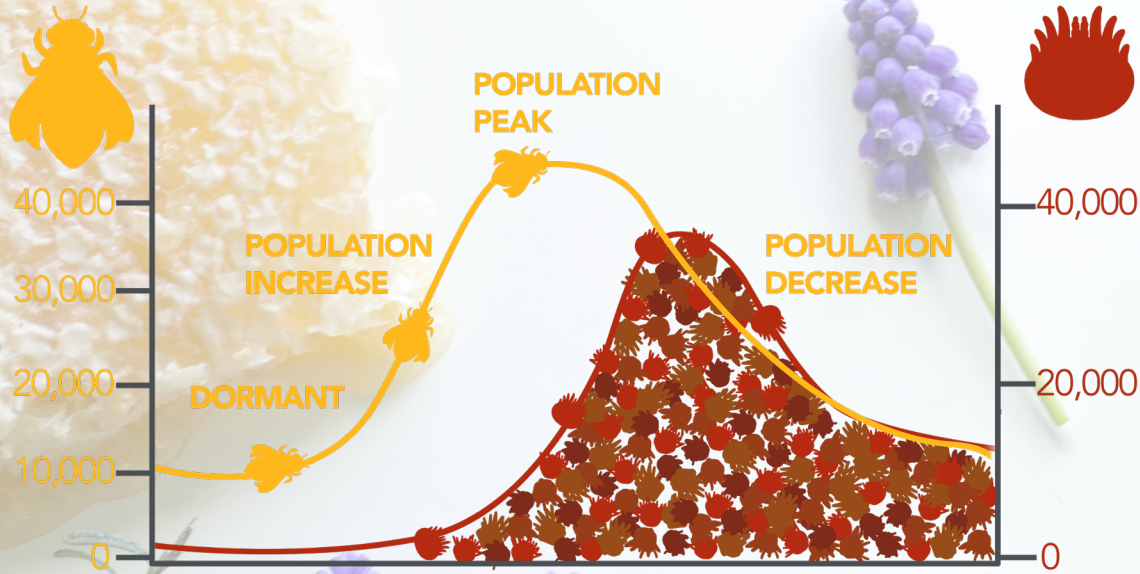


MITE LEVELS IN A HIVE OVER THE BEEKEEPING SEASON



SEASONAL DEVELOPMENT: Note the phases of a Honey bee colony on the graph above. Mite levels can quickly overwhelm and kill entire bee populations. Phases vary and are dependent on location and climate. Select the appropriate varroa control method for your location. Treat with Formic Pro during colony population increase, peak and decrease phases.



WHERE TO PURCHASE?

For a full list of our distributors please visit our website www.NODGLOBAL.com or call **866-483-2929**.

CUSTOMER SUPPORT

+1 613 398 8422
info@nodglobal.com
To learn more visit:
www.NODGLOBAL.com



Healthy Bees. Healthy Planet.



MADE IN CANADA



WHY TREAT WITH FORMIC PRO?



HIGH EFFICACY

Formic Pro has 83-97% efficacy and kills mites under the cap.



NATURAL

Formic Pro is made from all natural RAW materials.



NO RESISTANCE

Formic Acid has been used for over 30 years without any known resistance.



READY TO USE

Formic Pro is ready to use out of the package. No mixing required.



RESIDUE FREE

Treat during the Honey Flow. Formic Pro leaves no residues in wax or honey.



BIODEGRADABLE

Formic Pro strips are made from all natural biodegradable materials and can be composted.



EXTENDED SHELF LIFE

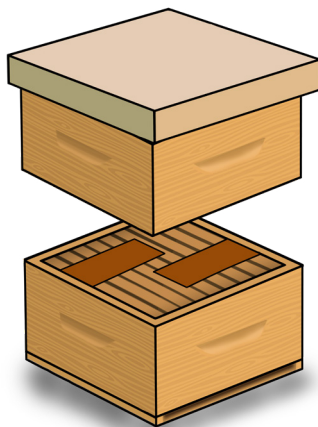
Formic Pro has a 24 month (2 year) shelf life.



QUICK TREATMENT

Full Dose (2 strips) for 7 days.

APPLICATION



7 DAY
2 STRIPS
APPLIED ONCE

APPLY 2 STRIPS
AT DAY+0 FOR 7
DAYS.

FEED

colonies as they build up in the development phase. Continue to monitor feed stores to ensure your bees are receiving adequate nutrition throughout the beekeeping season.

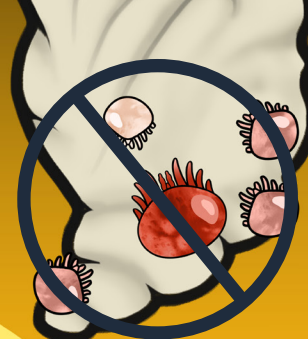
MONITOR YOUR MITE LEVELS

As a rule of thumb, in colonies with brood, mite populations double about once a month -- and even quicker when the colony has large amounts of drone brood¹

¹ <https://honeybeehealthcoalition.org/varroa/>

TREAT

in the spring to protect your summer bees, and again in the autumn, to protect the bees that will make up the winter cluster.



TARGET MITES WHERE THEY REPRODUCE,
UNDER THE CAP.

TARGETS

Formic Pro causes mortality to both male and female varroa under the brood cap as well as to the varroa on adult bees.

READ & FOLLOW LABEL GUIDELINES

Follow all application instructions to achieve best results.

TREATMENT GUIDELINES

TEMPERATURE

Outside daytime temperature highs should be between 10° - 29.5°C on day of application. **FIRST 3 DAYS** are the most crucial.

VENTILATION

Remove entrance reducers, or set-back colony by 4cm (1.5inch). **ENTRANCES MUST BE FULL WIDTH OF THE HIVE**, typically the bottom board entrance, minimum height 1.3cm (0.5inch) for entire treatment. *Open screen bottom boards **DO NOT** help the bees move fresh air into brood chamber.

SHELF LIFE

Formic Pro is an extended shelf life formulation (24-months) and does not require any temperature controlled storage.